



Home Art & Sales Services AG  
Sihleggstrasse 23  
CH-8832 Wollerau

[www.zepter.com](http://www.zepter.com)

© COPYRIGHT HOME ART & SALES SERVICES AG - ZEPTER GROUP - Code PMD-HA42-09-EN Rev.0714 - Artwork: BRID MARKETING - ITALY



by Zepter Group

**ZEPRRESSO  
CAFÉ**

**Instruction manual (ZEP-200)**





## TABLE OF CONTENT

01.	Introduction	pag. 1
02.	Safety instructions	pag. 2
03.	Coffee machine	pag. 3
04.	Technical Data	pag. 4
05.	Usage	pag. 4
06.	Cleaning and maintenance	pag. 5
07.	Troubleshooting	pag. 6
08.	Warranty	pag. 6
09.	Disposal	pag. 6
10.	Warranty card	pag. 7

## 01 | INTRODUCTION

### ZE-PRESSO CAFÉ, THE EXOTIC WORLD OF ESPRESSO COFFEE IN YOUR HOME

Congratulations on your purchase of ZEP-200 ZE-PRESSO CAFÉ, the innovative and sophisticated device for the preparation of the best espresso coffee.

ZE-PRESSO CAFÉ is a stylish, functional, beautiful and high-quality device. It possesses all the characteristics of modern household appliances of the 21st century - it is small-sized and lightweight; you can easily move it around and place it anywhere you like; it is made exclusively of the best quality materials and meets the world's strictest criteria of quality; it is perfectly simple to use and maintain. ZE-PRESSO CAFÉ perfectly fits the decor of both modern and classic kitchens and it is a real decoration of your interior, wherever you put it.

In an effort to satisfy a variety of tastes and preferences, our expert teams have prepared an original coffee collection, ZE-PRESSO CAFÉ. The entire process, from picking, drying, roasting, grinding to packing are subjected to rigorous control to meet the top world standards.

ZE-PRESSO CAFÉ is purely (100%) natural, devoid of any additives, packed in single unit capsules, and hermetically sealed to retain natural flavour and aroma of coffee.

With the ZE-PRESSO CAFÉ and ZE-PRESSO coffee capsules, you will have the most sophisticated beverage for all of your senses to relish.

Before using the ZE-PRESSO CAFÉ for the first time, read this instruction manual and keep it for further reference.

The manual uses specification to draw your attention to some details:

**⚠ Warning!** For safety reasons, be careful.

**⚠ Attention!** This note contains additional information and useful advice for the appropriate use of the appliance.

## 02 | SAFETY INSTRUCTIONS

### IMPORTANT SAFETY INSTRUCTIONS

1. This user's manual is an integral part of the appliance. Read carefully all the instructions and safety notices contained in the present manual as they give important information on the device use and maintenance. Keep the manual for future reference!
2. After removing the packaging, make sure the machine is intact.
3. If you do not understand information, do not use the appliance and refer to professionally Zepter qualified personnel.
4. Before connecting the appliance to the mains, make sure the data on the rating label match those of your electricity mains.
5. The use of adaptors, multiple sockets and/or extension is generally to be avoided; if you cannot do without them, make sure that only standard or multiple adaptors and extensions are used which conform to current safety regulations.
6. Do not use the appliance if any damage is shown on the power cord or the plug. In case of malfunctioning, switch off, without trying to repair it. For any repairs refer only to your Zepter Repair Centre.
7. Ensure that the power cable does not get caught and does not rub against sharp edges.
8. Do not plug or unplug the device with wet hands.
9. In case of emergency disconnect the device from the mains.
10. The ZE-PRESSO coffee machine was designed exclusively for domestic purpose to prepare espresso coffee with ZE-PRESSO CAFÉ capsules.
11. Do not use the coffee machine outdoor and do not expose to severe weather elements, such as: rain, hail, snow, wind, etc.
12. Do not use the coffee machine in the presence of explosive, highly flammable materials, gas or naked flames.
13. This appliance can be used by children from 8 years and above and persons with reduced physical, sensory or mental capabilities or lack of experiences and knowledge under supervision or if they have been instructed about how to use the appliance safely and about the hazards involved. Children shall not play with the appliance. Cleaning and maintenance shall not be performed by children without supervision.
14. This device can only be assigned to functions it has been designed for (e.g. prepare coffee) and it is described in the user manual. The producer cannot be held responsible for any damage deriving from improper, incorrect or unreasonable use.

15. The appliance should be cleaned only with a dry or slightly damp cloth. Never use abrasives, alcohol or other solvents.
16. Switch off the machine before starting any cleaning operations.
17. Never immerse the appliance in water or other liquides. Do not put the ZE-PRESSO CAFÉ or any individual parts in the dishwasher.
18. Always fill the water tank with clean, cold water. Never fill the tank with mineral water, milk or other liquides.
19. If you will be absent for an extended period, turn the machine off and unplugged from mains.
20. ZE-PRESSO CAFÉ is designed for use only with ZE-PRESSO CAFÉ coffee capsules. Do not use other brands of coffee capsules, it can result in coffee machine damaged and it will void your warranty.
21. Do not store the machine at temperatures lower than 0°C to prevent irreparable damages.
22. At the end of its lifecycle, we recommend making the machine safe by cutting the power cord. Do so only after unplugging it from the mains! Do not dispose of the machine as ordinary rubbish, but leave it with personnel, qualified to collect such material. In this way it will be properly disposed of and recycled. This is a valuable aid for safeguarding our environment!

## 03 | COFFEE MACHINE (ZEP-200)

### User instructions and safety regulations

READ THIS MANUAL CAREFULLY BEFORE USING YOUR ESPRESSO MACHINE

### APPLIANCE DESCRIPTION

- (A) - Coffee button with GREEN indicator light ☺
- (B) - ON button with RED indicator light Ⓛ
- (C) - Hatch opening and closing lever
- (D) - Capsule holding hatch
- (E) - Coffee distributor
- (F) - Capsule holding basket. Can hold up to 12-14 capsules
- (G) - Cup holding grill
- (H) - Excess liquid tray
- (L) - Storage tank
- (M) - Heated area for resting cups

### ACCESSORIES

Included with your machine is the following:

- 2 empty orange capsules - required for the first use of the machine and for subsequent washing.
- 1 brush for cleaning the coffee distributor.



04 | TECHNICAL DATA

<b>Name:</b>	ZE-PRESSO	<b>Model:</b>	ZEP-200
<b>Dimensions:</b>	W305 x D185 x H265 mm	<b>Type</b>	41064D
<b>Weight:</b>	4.4 kg	<b>Voltage</b>	220-240 V ~ 50/60 Hz
<b>Water tank capacity:</b>	1 litre	<b>Power</b>	820-980 W
<b>Pump pressure:</b>	20 bar	<b>Auto Shut Off function</b>	YES
<b>Designed in Italy</b>		<b>Certified in EU</b>	

**Made in China**  
The manufacturer has the right to modify the look and/or technical aspects of the products without prior warning to improve their use and performance.

**AUTO SHUT OFF FUNCTION**

The machine with Auto-Shut-Off function turns off automatically, assuring a remarkable energy saving, a longer lasting and better functionality of your machine.

**⚠ Attention!** ZE-PRESSO coffee machine will turn off automatically in 15 minutes after brewing the last coffee.

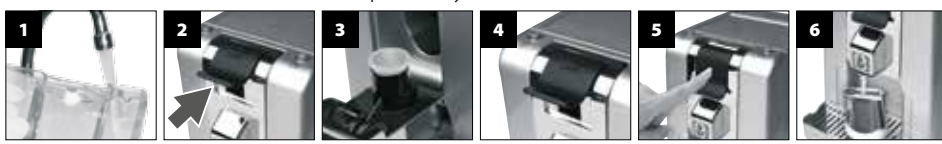
**In order to switch the machine ON again,** depress the switch (B) and hold it down for 2 seconds, red light goes ON, when the pushbutton (B) is released the machine is again ON.  
**In order to switch OFF the machine without waiting for AUTO-SHUT-OFF,** depress the switch (B) and hold it down for 5 seconds, red light goes OFF (after a few seconds), when the pushbutton (B) is released the machine is completely switched OFF.

05 | USAGE

**First time use**

**⚠ Attention!** These instructions only concern the first time you use the appliance.

**Recommendation!** Use clean water from one of ZEPTEP purification systems.



**1** Fill the water tank to the half-way point (L).  
**2** Open the hatch (D) by pushing the lever (C) upwards.  
**3** Insert the orange capsule provided into its holder.  
**4** Close the hatch.  
**5** Push the lever (C) downwards, ensuring that the hatch (D) is closed.  
**6** Place a container on the grill.



**7** Insert the plug.  
**8** Press the ON button (B) for one second.  
**9** Press the coffee button (A).  
**10** Wait for the water to come out of the distributor (E) and leave it running for two minutes.  
**11** The flow will not stop automatically. To stop it push the button (A).  
**12** Retrieve the orange capsule which must be preserved for subsequent washing.

**Daily use - how to prepare an espresso**

**Recommendation!** Use clean water from one of ZEPTEP purification systems.



**1** Fill the tank with clean water.  
**2** Insert the plug.  
**3** Press the ON button (B) for one second. The red light will turn on.  
**4** Wait until the green indicator light switches on.  
**5** Open the hatch (D) and insert a coffee capsule.  
**6** Close the hatch (D).  
**⚠ Warning!** never fill the tank with mineral water, milk or other liquids.



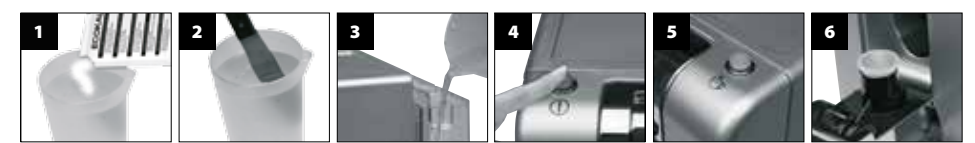
**7** Place a cup on the grill.  
**8** Press the coffee button (A). The flow will not stop automatically. To stop it press the button (A).  
**9** Once the quantity desired has been reached, press the button (A).  
**10** Once you have made a coffee always expel the capsule. Capsules are automatically expelled by opening the hatch.  
**11** Periodically empty and rinse the basket (F) and the tray (H).  
**12** The machine shuts off automatically in 15 mins. after the brewing of the last coffee, to save energy.

06 | CLEANING AND MAINTENANCE

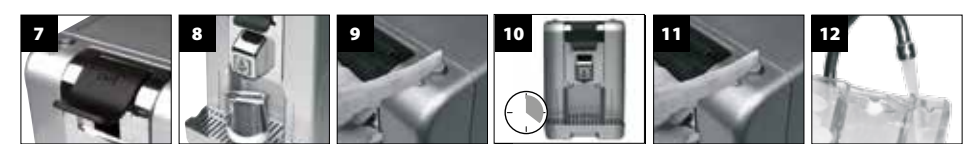
**WARNING:** Limestone deposits (which are naturally present in the water) can seriously affect the functioning of the machine, and it is therefore **absolutely necessary to carry out decalcification approximately every 2 months.**  
**Recommendation!** To eliminate a creation of limestone, use filtered water from one of ZEPTEP purification systems.

**IMPORTANT:** The company will not be held responsible for repair work under guarantee regarding non functioning or malfunctioning espresso machines **caused by a lack of decalcification by the user. Read the instructions carefully.**

**⚠ Attention!** Use recommend decalcification media ECOKAL ZES-100-101. Never use vinegar. Do not stop the decalcification procedure until the operation has finished.

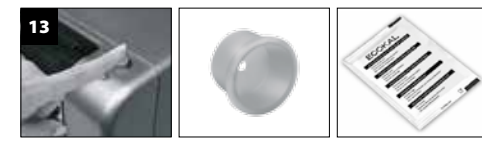


**1** Pour the packet contents into a vessel containing 1 litre of warm water.  
**2** Stir the contents until they are completely dissolved.  
**3** Pour the solution into the storage tank (L).  
**4** Press the ON button (B). The red indicator light will switch on.  
**5** Wait until the green indicator light switches on.  
**6** Open the hatch (D) and insert the orange capsule provided.



**7** Close the hatch (D).  
**8** Place a container on the grill.  
**9** Press the button (A) and let the liquid flow for 1 minute.  
**10** Wait 20 minutes keeping the machine switched on.  
**11** Press the button (A) until there is no more water.  
**12** Rinse the storage tank thoroughly and then fill it with clean water.

**⚠ Attention!** The machine automatically switches off after 15 min (Auto-shut-off function). In order to be able to continue the cleaning for 20 minutes, press the „COFFEE“ pushbutton (A) twice (ON and OFF) again after 5 minutes from the beginning of cleaning procedure. Complete 20 min cleaning cycle by waiting 15 minutes until the machine switches OFF automatically.

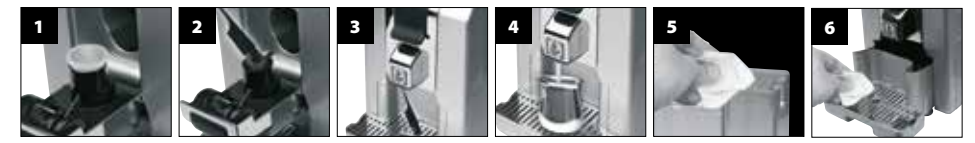


**13** Press the button (A) and let water flow until the water tank is emptied.  
**WARNING:** for decalcification and rinsing operations use the orange capsule provided.  
**ZES-100-101** To purchase packets of ZE-PRESSO ecological limestone decalcification powder and orange capsules, speak to your ZE-PRESSO Representative.

**Cleaning**

We recommend carrying out the following procedure on a regular basis:

**⚠ Attention!** Use only soft cloth for cleaning. Never use abrasives, alcohol or other solvents.



**1** Use the specifically provided orange capsule to prepare 1 or more cups to wash the distributor (E).  
**2** Clean the coffee distributor chamber using the bristles of the cleaning brush to eliminate any encrustation.  
**3** Put the tip of the cleaning brush into the coffee distributor (E) to get rid of any incrustation.  
**4** Use the specifically provided orange capsule, then rinse the distributor (E) until clean water comes out.  
**5** Wash the water storage tank (L).  
**6** Clean the tray (H) and the basket (F).



**7** Clean the capsule holder hatch (D).  
**8** Clean the machine with water and a soft cloth only. Never immerse the machine in water.

## 07 | TROUBLESHOOTING

<b>There are no indicator lights</b>	Check if the electric plug is correctly inserted into the electrical socket, that the ON button (B) has been pressed and that the corresponding red indicator light is on.
<b>The machine makes strange noises</b>	Check that there is water in the storage tank (L).
<b>The indicator lights are permanently on but no coffee comes out</b>	The coffee distributor (E) could be blocked. To clean it follow the instructions written in the "Cleaning" section.
	Check that the capsule holder hatch (D) is properly closed.
<b>There is water at the bottom of the machine</b>	The capsule you have inserted may be defective. WAIT A FEW SECONDS BEFORE OPENING THE TRAY, then try with a new capsule.
	Check that the storage tank is properly placed in its holder.
<b>There is a slight hissing sound once the coffee has been poured out</b>	It is not a fault but the normal settling of the pressure control valve.

If problems persist please contact your ZE-PRESSO CAFÉ Representative.

## 08 | WARRANTY

This appliance can be only be assigned to the functions it has been designed for, i.e. espresso making in domestic situation only. The manufacturer cannot be held responsible for any damage deriving from improper, incorrect or unreasonable use.

All our appliances have undergone strict inspection test and are guaranteed against manufacturing defects. The guarantee starts from the date of purchase. The date of purchase is the date shown on the invoice issued by the dealer upon the delivery of the appliance. **Evidence of original purchase is required for warranty services, so it is important to keep your sales receipt.**

**The warranty period is applicable according local country law and regulation in force.**

The manufacturer undertakes to repair or replace cost-free within the warranty period those parts that prove to have manufacturing defects. Those defects that are not clearly attributable to either material or the manufacturing will be exanimate at one of ZEPTER Service Centre or at our headquarters and charged according to the outcome.

**The warranty is only valid if:**

- The device shows material or manufacturing defects.
- No signs of breaking by the customer or the presence of no original pieces fit by other people had been found.
- Only original accessories had been used.
- The unit has not been overloaded or crashed.
- Descaling has been carried out regularly and according to instruction provided in the manual.

**The warranty does not include:**

- The parts which can be normally wear out.
- The damages caused by transport, inadequate use, negligence and/or incorrect use.
- The machine has been tampered with.
- The machine has been used for unintended purposes.
- Safety regulations were not respected and do not follow the instructions in the User Manual.
- Any damages to the product resulting from repairs and/or maintenance done by unauthorized repair centre.

This guarantee does not affect the consumer's statutory rights under applicable national legislation in force, nor the customer's rights against the retailer arising from the sales/purchase agreement.

In the absence of applicable national legislation, this guarantee will be consumer's sole and exclusive legal remedy, and the manufacturer shall not be liable for any incidental or consequential damages for breach of any express of implied guarantee of this product. The liability of manufacturer is limited to and shall not exceed the purchase price of the product actually paid by the consumer.

**⚠ Attention!**

If, after the purchase of the product, its label with serial number has been removed or is not recognizable, the manufacturer reserves the rights to refuse the warranty service.

If you have any comments or questions concerning the functioning of the machine or warranty, please contact ZEPTER Sales Representat.

## 09 | DISPOSAL

**INFORMATION FOR USERS**

**In accordance with European Directives 2002/95/CE, 2002/96/CE and 2003/108/CE on the restriction of the use of dangerous substances in electric and electronic equipment as well as their waste disposal. The barred symbol of the rubbish bin shown on the equipment indicates that, at the end of its useful life, the product must be collected separately from other waste.**


**Do not dispose of electrical appliances as unsorted municipal waste, use separate collection facilities;** therefore, any products that have reached the end of their useful life must be given to waste disposal centres specialising in separate collection of waste electrical and electronic equipment, or given back to the retailer at the time of purchasing new similar equipment, on a one for one basis. The adequate separate collection for the subsequent start-up of the equipment sent to be recycled, treated and disposal of in an environmentally compatible way contributes to preventing possible negative effects on the environment and health and optimises the recycling and reuse of components making up the apparatus.

**If electrical appliances are disposed of in landfills or dumps, hazardous substances can leak into the groundwater and get into the food chain, damaging your health and well-being. Contact your local government for information regarding the collection systems available.**

Abusive disposal of the product by the user involves application of the administrative sanctions according to the laws in force.



## 10 | WARRANTY CARD



---

**1 WARRANTY CARD: ZE-PRESSO CAFÉ (ZEP-200)**

---

<b>2 DATE OF PURCHASE:</b>	<b>3 WARRANTY PERIOD:</b>	<b>MONTHS</b>
<b>4 SERIAL NO.:</b>		
<b>5 LOT NUMBER:</b>		
<b>6 NAME AND ADDRESS OF PURCHASER:</b>		
<b>7 FAULT/DEFECT:</b>		
<b>8 STAMP AND SIGNATURE OF RETAILER:</b>		


---

**9 AUTHORIZED SERVICE CENTRE NAME AND ADDRESS:**

**E-MAIL:** \_\_\_\_\_ **TEL:** \_\_\_\_\_

---

**10** This warranty card has to be sent to the retailer or to the authorized service centre, together with the defective device and the receipt, as proof of purchase.



LIVE BETTER · LIVE LONGER





by Zepher Group

**ZEPRESSO  
CAFÉ**